

BAINBRIDGE AT WELLINGTON GREEN

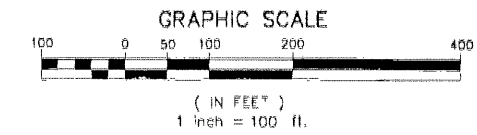
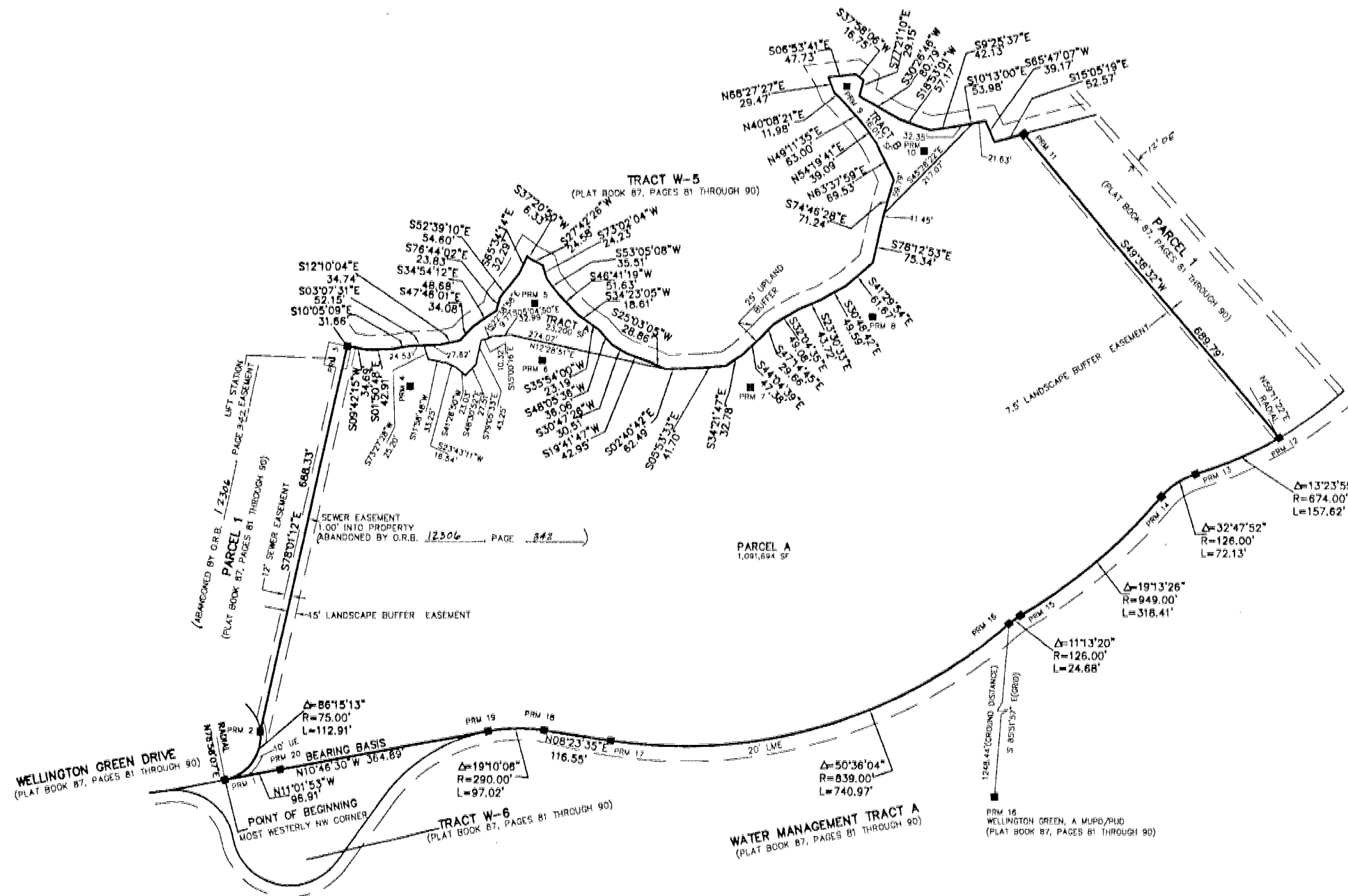
A PLANNED UNIT DEVELOPMENT BEING A PART OF WELLINGTON GREEN MUPD/PUD
 BEING A REPLAT OF A PORTION OF PARCEL 1, "WELLINGTON GREEN, A MUPD/PUD",
 AS RECORDED IN PLAT BOOK 87, PAGES 81 THROUGH 90 OF THE PUBLIC RECORDS OF PALM BEACH
 COUNTY, FLORIDA, LYING IN SECTION 13, TOWNSHIP 44 SOUTH, RANGE 41 EAST, VILLAGE OF WELLINGTON, PALM BEACH COUNTY, FLORIDA

THIS INSTRUMENT PREPARED BY
 DAVID P. LINDLEY
 OF
CAULFIELD and WHEELER, INC.
 SURVEYORS - ENGINEERS - PLANNERS
 7301-A WEST PALMETTO PARK ROAD, SUITE 100A
 BOCA RATON, FLORIDA 33433 - (561)392-1991
 JULY - 2000



STATE OF FLORIDA
 COUNTY OF PALM BEACH
 THIS PLAT WAS FILED FOR
 RECORD AT _____ M.
 THIS _____ DAY OF _____
 A.D. 2001 AND DULY RECORDED
 IN PLAT BOOK _____ ON
 PAGES _____ AND _____
 DOROTHY H. WILKEN
 CLERK CIRCUIT COURT
 BY: _____
 DEPUTY CLERK

SHEET 2 OF 3



NOTES COORDINATES, BEARINGS AND DISTANCES

COORDINATES SHOWN ARE GRID
 DATUM = NAD 83 1990 ADJUSTMENT
 ZONE = FLORIDA EAST
 LINEAR UNIT = US SURVEY FEET
 COORDINATE SYSTEM 1983 STATE PLANE
 TRANSVERSE MERCATOR PROJECTION
 ALL DISTANCES ARE GROUND
 SCALE FACTOR = 1.0000171
 GROUND DISTANCE X SCALE FACTOR = GRID DISTANCE
 BEARINGS AS SHOWN HEREON ARE GRID DATUM, NAD 83 1990
 ADJUSTMENT, FLORIDA EAST ZONE

COORDINATE TABLE

| PRM | NORTHING | EASTING |
|-----|-------------|-------------|
| 1 | 841708.1579 | 912028.3320 |
| 2 | 841698.1153 | 912111.4589 |
| 3 | 841855.2341 | 912784.8121 |
| 4 | 841445.5250 | 912714.8574 |
| 5 | 841232.6258 | 912802.1740 |
| 6 | 841218.6040 | 912762.2504 |
| 7 | 840857.8981 | 912716.8423 |
| 8 | 840648.7847 | 912641.7172 |
| 9 | 840597.3271 | 913241.7489 |
| 10 | 840583.1539 | 913129.6077 |
| 11 | 840390.1988 | 913159.0438 |
| 12 | 839943.5136 | 912633.4037 |
| 13 | 840087.0534 | 912959.1624 |
| 14 | 840145.1678 | 912529.5730 |
| 15 | 840386.8052 | 912323.3397 |
| 16 | 840406.5875 | 912308.6497 |
| 17 | 841092.7235 | 912100.0088 |
| 18 | 841208.0276 | 912117.1013 |
| 19 | 841304.5758 | 912115.0941 |
| 20 | 841663.0344 | 912046.8763 |